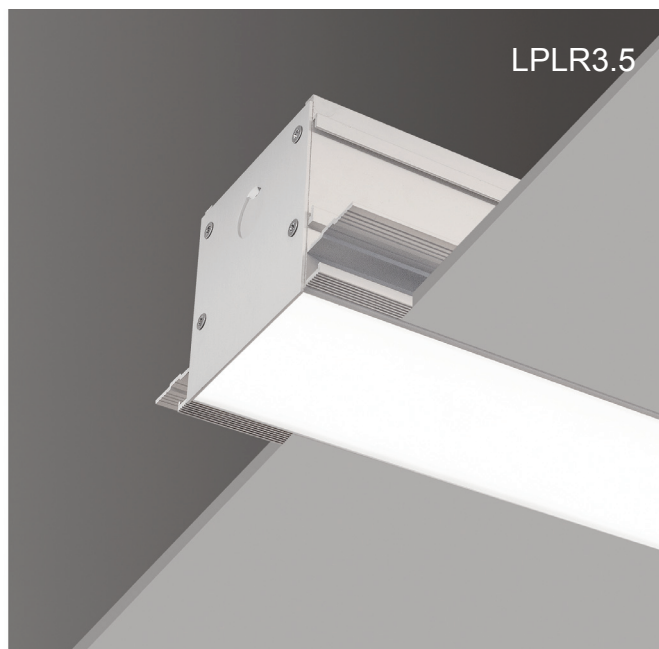
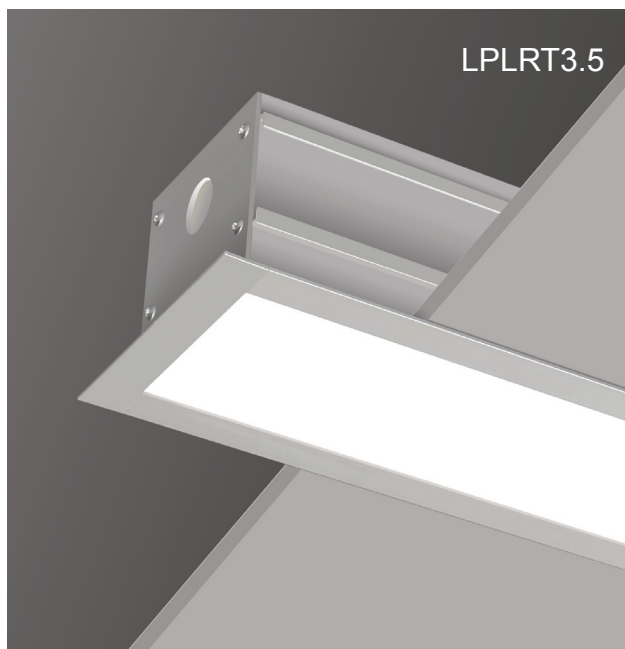

LIGHTPLANE RECESSED 3.5

Recessed with Trim (LPLR3.5T) & Trimless (LPLR3.5)



LIGHTPLANE RECESSED 3.5

Recessed with Trim (LPLRT3.5), or Trimless (LPLR3.5)

ZALITE

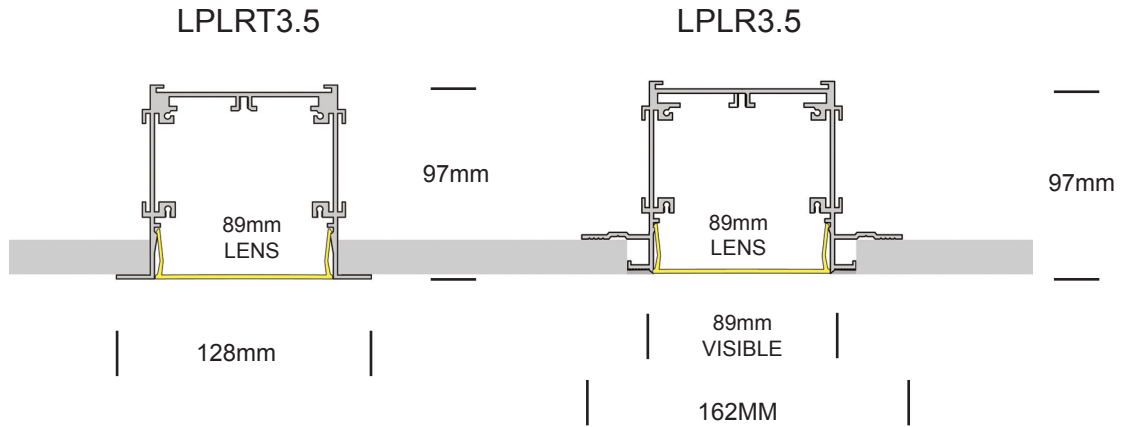


LIGHTPLANE RECESSED 3.5

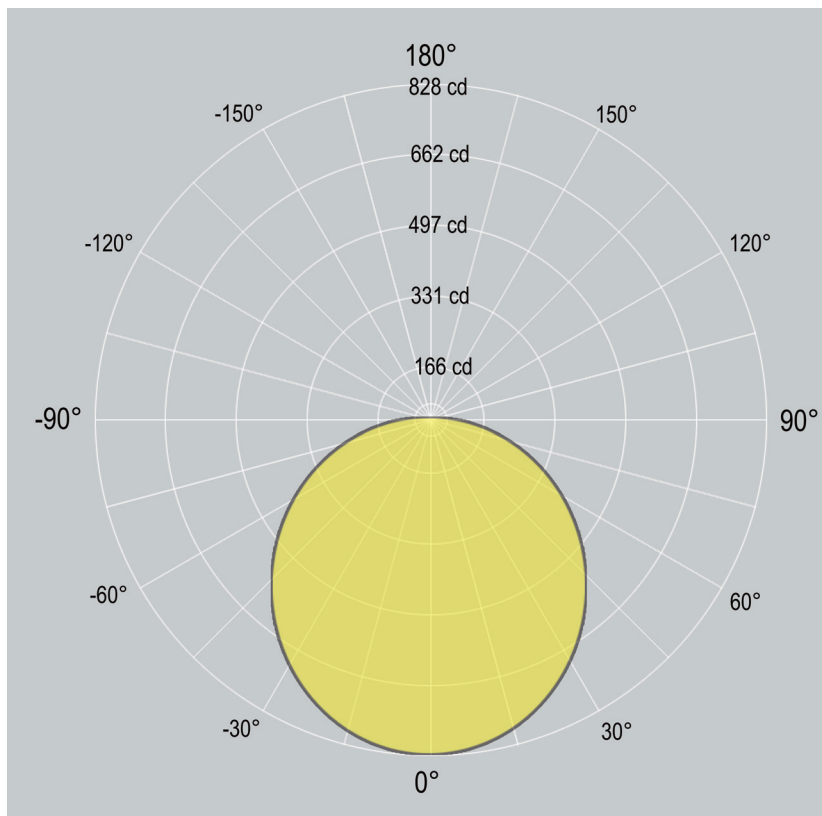


Recessed with Trim (LPLRT3.5), or Trimless (LPLR3.5)

Dimensions



Distribution



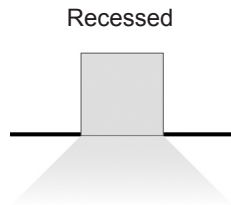
LIGHTPLANE RECESSED 3.5



Recessed with Trim (LPLRT3.5), or Trimless (LPLR3.5)

1. Base Model

LPLRT3.5	Recessed - with Trim
LPLR3.5	Recessed - Trimless



2. Run Length

Enter total linear length, (example: 6M)

3. LED Lamping

STD - xxxxK	SINGLE ROW LINEAR LED Standard Output, LED 20W/M 1750 delivered lm/M, 74 lm/W @ 4000K
HI - xxxxK	High Output, LED 30W/M 2450 delivered lm/M, 70 lm/W @ 4000K
	CCT: 3000K 3500K 4000K Option: 2700K 5000K 5700K 6500K Dual Row LED Strip Available
CV	Additional Single Row LED Options Constant Voltage (for custom lengths) - 12Vdc/24Vdc Contact factory for detail
TW	Tunable White (2700K - 6500K) Contact factory for detail
RGBW	Standard Output - RGB+WHITE - 24Vdc/12Vdc Contact factory for detail

4. LED Driver

0/1-10V	0/1-10V dimming
DALI	DALI dimming
DMX	DMX dimming
NONDIM	Non-dimmable
OTHER	(Consult factory for options)

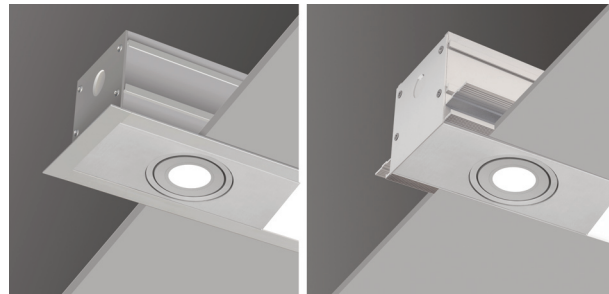
LIGHTPLANE RECESSED 3.5



Recessed with Trim (LPLRT3.5), or Trimless (LPLR3.5)

5. Spots (optional)

XX-7W25	specify total quantity - 7W - 25 degree beam
XX-7W40	specify total quantity - 7W - 40 degree beam
XX-13W25	specify total quantity - 13W - 25 degree beam
XX-13W40	specify total quantity - 13W - 40 degree beam
NOSPOTS	no spots



6. Finish

AL	Standard, natural aluminum
BK	Black powdercoat
WH	White powdercoat
Custom	Custom Color

7. Additional options

EM	1.5 Hour Emergency Kit
MS	Motion sensor
Others	Contact factory

LIGHTPLANE RECESSED 3.5

Recessed with Trim (LPLRT3.5), or Trimless (LPLR3.5)

ZALITE

Housing

100% recyclable, extruded architectural grade T6063 aluminum

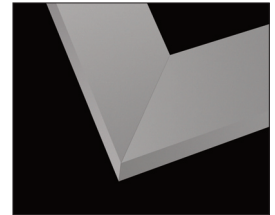
Emergency

Luminaires can be wired for emergency circuit and/or emergency battery backup. Consult factory for options.

Options

Mitered Corners

Consult factory for mitered corner angle options.



Mitered Corners

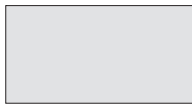
Finish

Standard finish is "Ultimate" aluminum - a smooth, clean and durable finish achieved from a deep-etch and two step clear anodizing process.

White, Black, Custom powdercoat options also available.



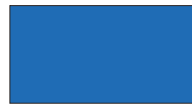
WH - WHITE



AL - ALUMINUM



BK - BLACK



Custom/____



ISO 9001:2015